



SQUARELUX 6

A19 DOWNLIGHT

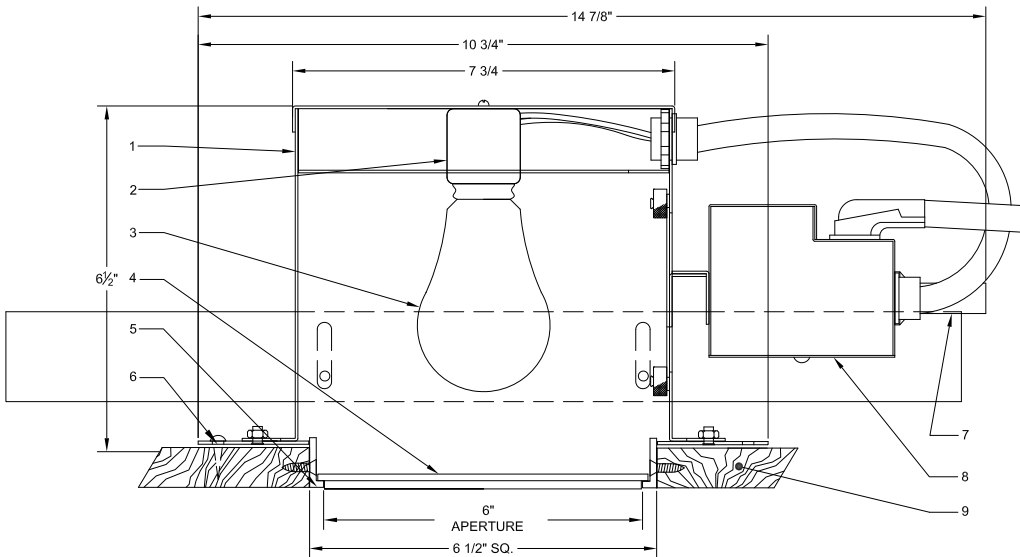
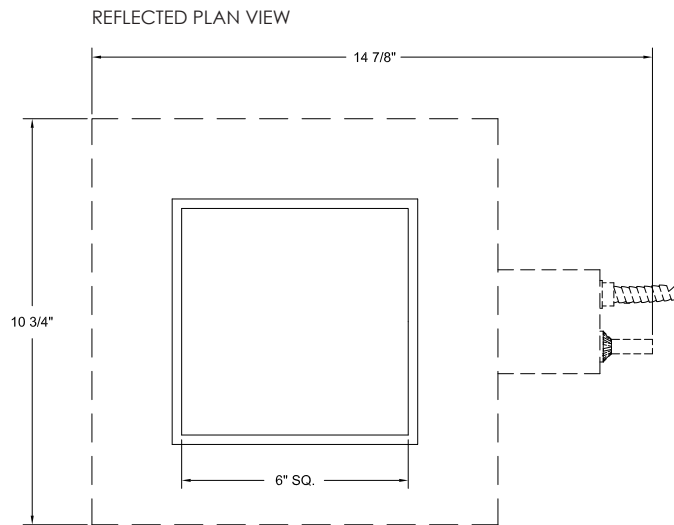
FOR WOOD OR STONE CEILINGS

SQUARELUX 6 appears as a 6" square illuminated glass surface coplanar with a wood or stone ceiling. No flange or trim is visible from below. A two-layer laminated glass with a step at the edge drops the lens surface to the ceiling line. An optional reveal in the glass outlines the floating lens. One 60W A19 lamp produces uniform illumination of the lens. There are several glass diffusion and pattern options. SQUARELUX 6 is designed for flangeless mounting in wood or stone ceilings.

FEATURES:

- 6" x 6" square aperture
- Fixed downlight A19 lamp, 60W Max
- Individual lensing options at lamp
- Exclusive two ply glass lens
- Non-IC thermally protected luminaire

SQUARELUX 6 is NRTL (Nationally Recognized Testing Laboratory) certified for purposes of OSHA safety standards product-approval requirements.



NOTES:

1. 20 GA steel housing
2. Porcelain medium base lampholder
3. 60W Type A19 lamp (by others)
4. Two-ply lens
5. Metal trim/painted finish
6. Optional mounting holes
7. Thermal protector
8. Wire connection box
9. 3/4" wood or stone ceiling

ORDERING MATRIX: **SQ6-W-** - - - -

Application	Lamp	Interior Finish	Aperture Lens	Trim Finish	Additional Accessories
D Downlight	60 60W Max A19	WH White	N None	P Primed	N None
		CU Custom	S Solite / Clear Pyrex	C Custom Color Painted	UVC UV Coating
			SS Solite / Solite	O Other	O Other
			SL Solite / Light Etch		
			FO Flashed Opal		

Contact NULUX directly to specify custom products

05/09/13